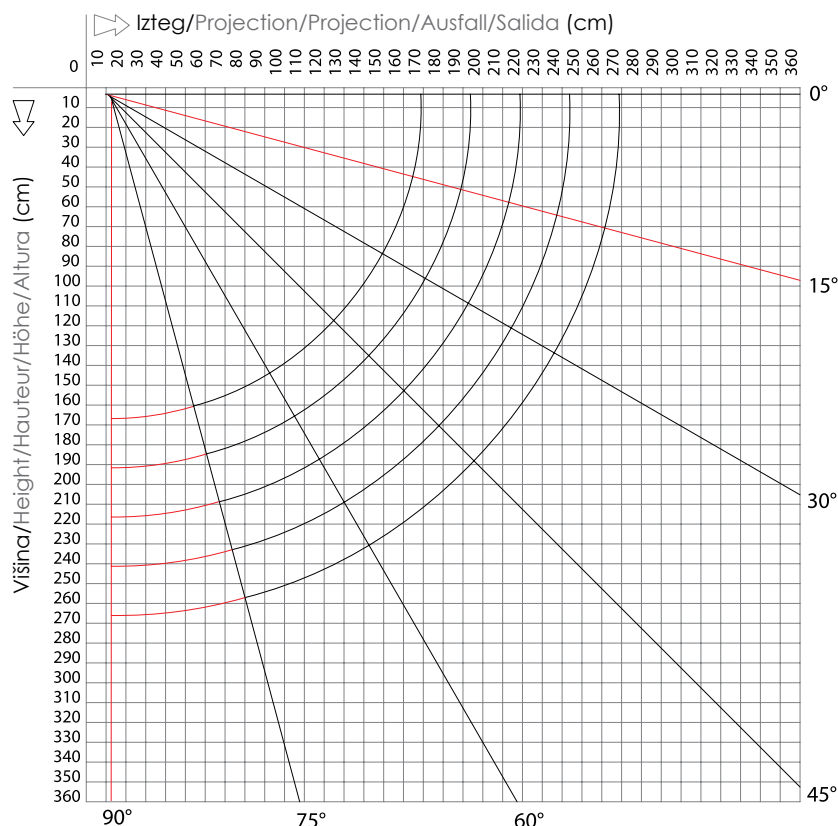


BASE LITE

Tehnični podatki



Diagram pokritosti - stropna in stenska montaža



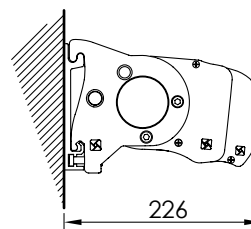
■ Pokritost pri stenski montaži 0° - 75° - Wall covering diagram 0° - 75°

■ Pokritost pri stropni montaži 15° - 90° - Ceiling covering diagram 15° - 90°

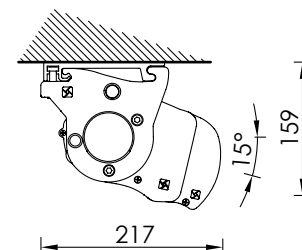
Odpornost na veter in dež



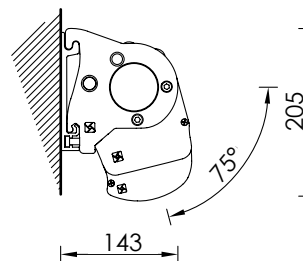
Stenska montaža



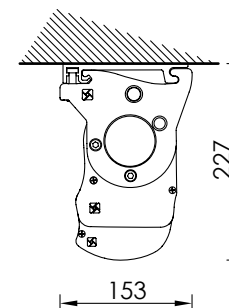
Stropna montaža



Stenska montaža, naklon 75°



Stropna montaža, naklon 90°



Minimalna širina pri paru rok Minimum awning encumbrances - 1 pair arms Encombrents minimum du store fini - 1 pair bras Mindestabmessungen der Markise - 1 Paar Gelenkarme Tamaño mínimo del toldo - 1 pareja de brazos

Izteg Projection Avancée Ausladung Salida	Min. širina Min. Width Largeur min. Breite min. Línea mín.
160	187
185	210
210	236
235	260
260	286