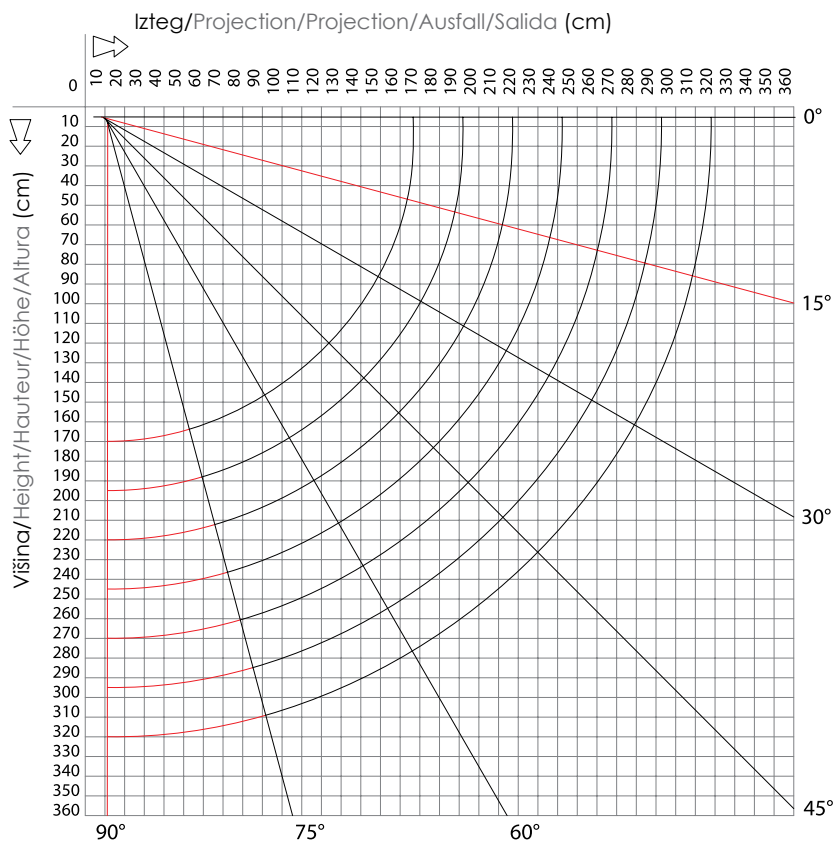


BASE PLUS

Tehnični podatki



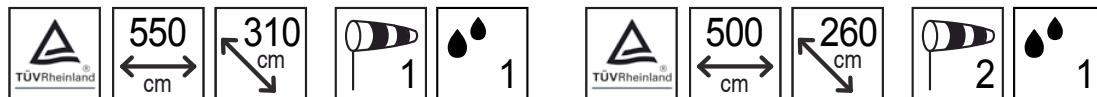
Diagram pokritosti



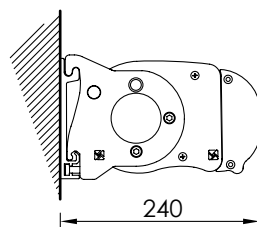
■ Stenska montaža, naklon od 0° - 75°

■ Stropna montaža, naklon od 15° - 90°

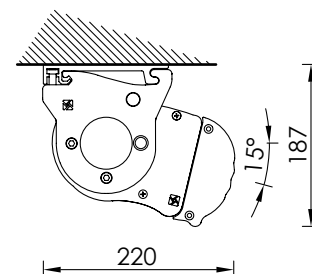
Odpornost na veter in dež



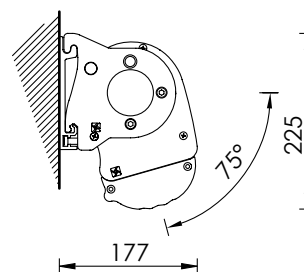
Stenska montaža,
naklon 0°



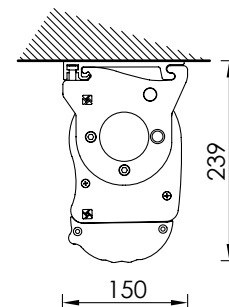
Stropna montaža,
naklon 15°



Stenska montaža,
naklon 75°



Stropna montaža,
naklon 90°



Minimalna širina pri enem paru rok Minimum awning encumbrances - 1 pair arms
Encumbrances minimum du store fini - 1 pair bras
Mindestabmessungen der Markise - 1 Paar Gelenkarme
Tamaño mínimo del toldo - 1 pareja de brazos

Izteg Projection Avancée Ausladung Salida	Min. širina Min. Width Largeur min. Breite min. Línea mín.
160	191
185	216
210	241
235	266
260	291
285	316
310	341

Vse mere so v mm \ All the sizes are in mm \ Tout dimension en mm
Alle Massen in den Montagenschemen verstehen sich in mm \ Todas las dimensiones están en mm accesorios